

**Keep peace with
your budget.**

Peacekeeper

Water Softener

Simple as One, Two, Three

Set the time, salt dosage, and hardness then your ready for operation.

Efficiency and Reliability:

Internal meter automatically initiates regeneration, and a 7 day override for reliable performance.

Easy to Retrieve Performance Data:

Controller tracks total water used, days and water since last regeneration, and average water usage for every day of the week.

Time Proven Valve Design:

Camshaft & Flapper design provides years of trouble free operation.

Large Salt Storage Tank:

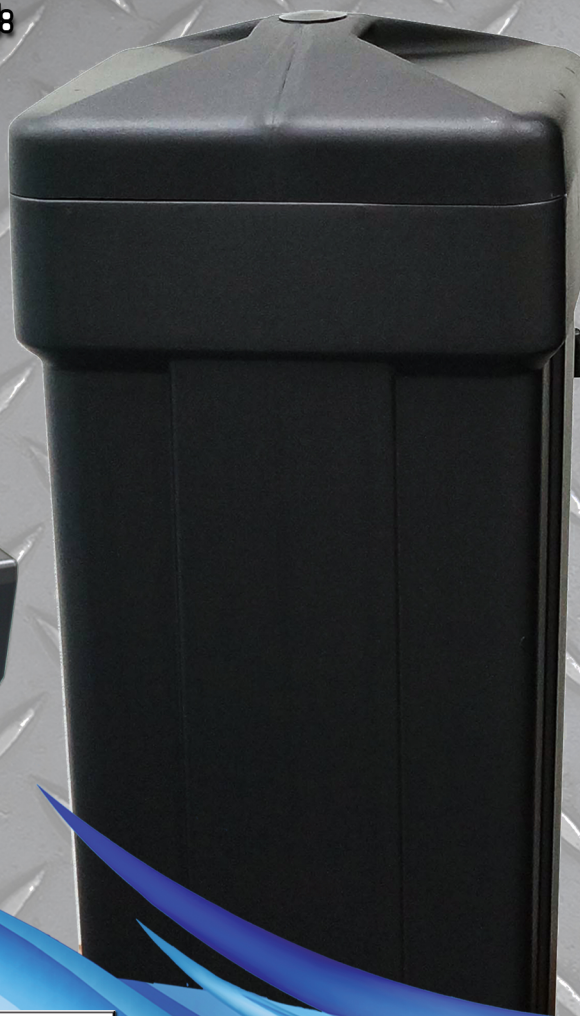
Holds enough salt for up to 12 regenerations, reducing the frequency of salt handling trips.

Bypass Assembly Included:

For easy installation and maintenance.

Basic Installation Kit:

Components for most simple installations are included.



Tested and Certified by WQA to NSF/
ANSI Standard 44 & 372 for softener
performance & lead free compliance and
CSA B483.1.

C USA

Model	Media Tank Size	Resin Volume	Rated Flow @ Pressure Drop	Brine Tank	Salt Storage	Drain Flow	Inlet/Outlet	Drain	Brine	Ship Weight
DRS8-26	8"x44"	0.80 ft ³	8gpm @ 12psi	14"x34"	240 lbs	1.7 gpm	1" NPT	1/2" NPT	3/8" NPT	78 lbs
DRS8-34	9"x44"	1.04 ft ⁴	9.6gpm @ 15psi	14"x34"	240 lbs	2.1 gpm	1" NPT	1/2" NPT	3/8" NPT	95 lbs
DRS8-40	10"x44"	1.25 ft ⁵	10.7gpm @ 15psi	14"x34"	240 lbs	2.7 gpm	1" NPT	1/2" NPT	3/8" NPT	110 lbs

Large LED Display

- Highly Visible in most installations.

Camshaft Indicator

- Provides a visual indicator of the camshaft rotation.

Manual Regeneration Button

- Initiates either immediate or delayed regeneration.

Time Button

- Displays current hour of the day and allows for easy time adjustments.

Salt Button

- Sets or Displays the current salt setting (high efficiency/high capacity).

Hardness Button

- Sets or Displays the incoming water hardness.

Flow Indicator

- Blinks on and off when water flow is present.

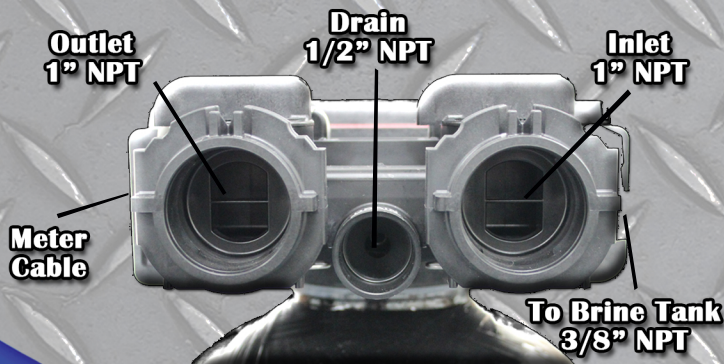
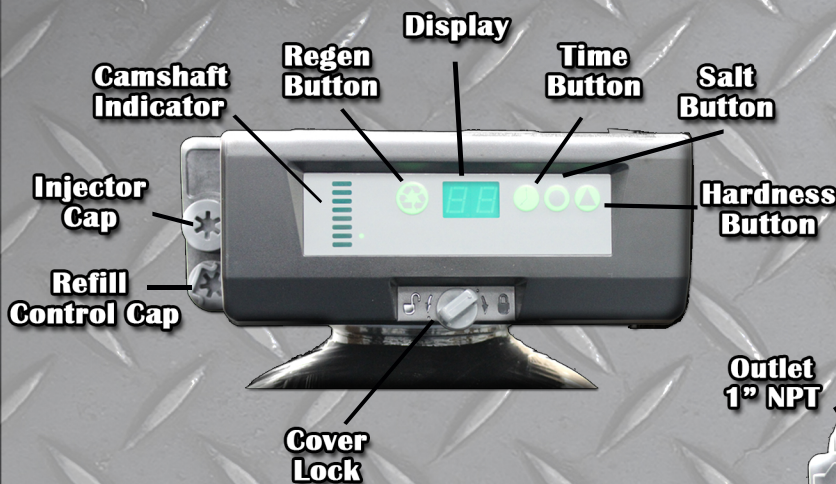
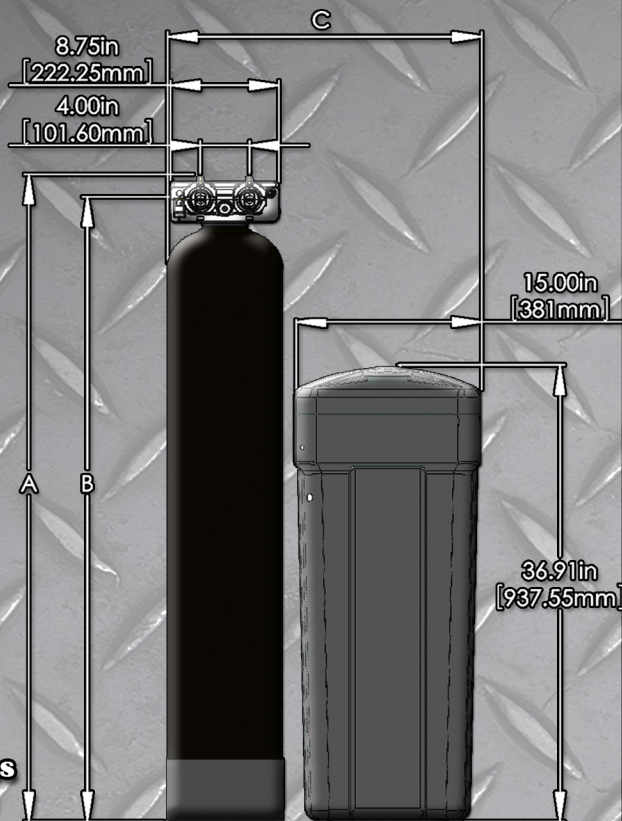
Power Loss Memory Retention

- Features battery-free Time of Day retention during loss of power. All other parameters are permanently retained in flash memory.

7 Cycle Regeneration:

- Backwash, Brine Draw, Repressurize, Rinse, 2nd Backwash, 2nd Rinse, Fill..

Dim	DRS8-26	DRS8-34	DRS8-40
A	48.3"	52.33"	48.4"
B	46.5"	50.51"	46.6"
C	24.36"	25.36"	26.36"
Footprint	25"W x 15"D	25"W x 15"D	26"W x 15"D



DIAMOND
H2O®

A Griesbach Company

www.diamondh2o.com

Bulletin: 105PEA-15-01

Diamond H2O® is a long standing member of these fine organizations:

