



Engineered Water Treatment Solutions
* Since 1932 *

DCS1 WATER SOFTNER SET-UP GUIDE

TOOLS/EQUIPMENT NEEDED FOR SET-UP:

- ◆ Garden Hose
- ◆ Duct Tape
- ◆ Funnel
- ◆ Ladder

SET-UP STEPS:

1. Using Diamond H2O supplied Check List, inspect all components to ensure all components were shipped, and arrived un-damaged.

2. (A). Remove Resin Tank(s) and Control Valve(s) from packaging and place Resin Tanks as close to installation area as possible.

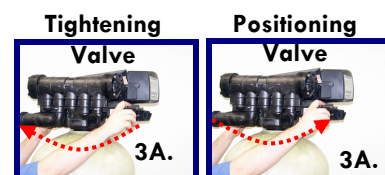
3. (A). Thread Control Valve(s) on Resin Tank(s) to determine the 'Front Orientation' of Resin Tank(s). (Note: To prevent Cross-Threading, turn Control Valve(s) backwards 'Counter Clock-Wise' until threads match.) When Threads match, Tighten Control Valve on Resin Tank. (B). Mark the Front Location on Resin Tank(s) and remove Control Valve(s). Position Resin Tank(s) in final installation location.

***NOTE:** This step is especially important for larger Water Softener Systems – Resin Tanks become very heavy and difficult to move/rotate after they have been filled with Media.

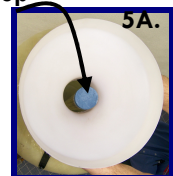
4. (A). For Twin Alternating Water Softener Systems WITH pre-plumbed Header set Tanks, and use Pre-Plumbed Header to determine proper position of both Resin Tanks.
5. (A). Install the PVC Distributor System into Resin Tank(s), and cover the top (exposed end) of Distributor Riser (recommend Duct Tape) to prevent Gravel & Media from falling into Distributor Riser.
***NOTE:** Most Water Softeners ship with Distributor Systems already installed in Resin Tank(s).

6. (A). SLOWLY pour the Support Gravel into the Resin Tank(s) – (*Note: A funnel is recommended when pouring Gravel & Media). The Gravel will cover the Distributor Baskets or Rails.
***NOTE:** Depending on Water Softener Systems, there may be (2) different Gravels shipped with your System. Be sure to use the correct Support Gravel – All bags will be labeled.

***CAUTION:** The Distributor System is constructed of PVC. It could break if the Gravel is poured into the Tank(s) too quickly. It is good practice to fill tank with water above the distributor and laterals before pouring in gravel. Also it is recommended to hold distributor in place while pouring gravel, this will prevent distributor from lifting up in the tank(s) and it will make Step 10 easier if distributor is in the center of the tank



Distributor Top





DCS1 WATER SOFTNER SET-UP GUIDE

SET-UP STEPS (Continued):

7. Pour Resin into the Resin Tank(s).

***NOTE:** If a Single Tank Water Softener, all Resin goes into Tank. If a Multiple Tank Water Softener, Resin gets equally divided between all Tanks. Use all Resin Supplied.



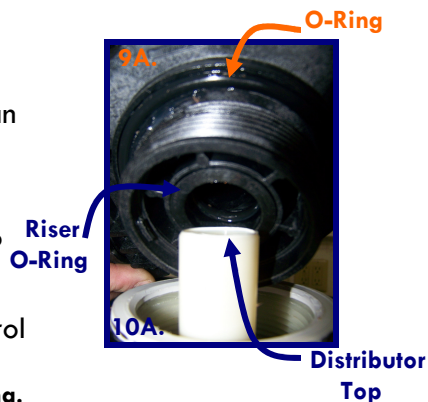
8. Remove tape from the top of distributor riser. Fill Resin Tank(s) completely with Water.

9. Lubricate the Distributor Riser Tank Mounting O-Ring located at the base of the Control Valve (silicone is provided with each valve).

10. (A). Thread the Control Valve(s) onto the Resin Tank(s). Tighten the Control Valve and verify the orientation is correct. The plumbing can now be connected.

***NOTE:** Be sure that the Distributor slides easily into the Riser O-Ring and it does not bind and/or cut the O-Ring.

***NOTE:** Be careful not to cross thread the Control Valve when tightening onto the Tank.



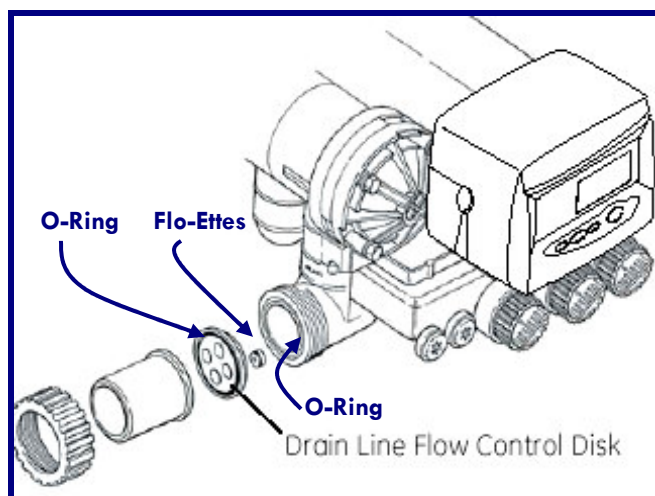
11. Connect the facilities in coming water supply/plumbing to the Control Valve.

***NOTE:** Be sure no to put undue stress on the Control Valve with the plumbing. Too much pressure can result in damage to the Control Valve(s) and /or Tank(s).

12. (A). Be sure that Drain Line Flow Control is installed prior to beginning Start-Up.

*** NOTE:** Be sure that Drain Line Flo-Ettes are secured to Flow Disc and are facing towards the Valve. (O-Rings face towards Brass Fittings).

DIAMOND H2O RECOMMENDS INSTALLING AN INLET & OUTLET ISOLATION VALVE, AND A BY-PASS VALVE WITH ALL WATER SOFTENER INSTALLATIONS.



PLEASE CONTACT YOUR LOCAL DISTRIBUTOR OR
DIAMOND H2O WITH ANY QUESTIONS.